



GREEN HYDRAULIC POWER



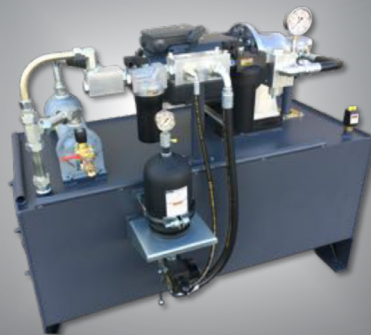
Built  
to  
LAST



Up to  
**70%**  
Energy Savings



Noise Emission  
**REDUCED BY**  
Up To **20 DB(a)**



- ✓ Generates Less Heat
- ✓ Less Cooling Needed
- ✓ Higher Machine Yield
- ✓ Less Oil Volume
- ✓ Smaller Footprint
- ✓ Industry 4.0 Ready
- ✓ Lower HP Needed

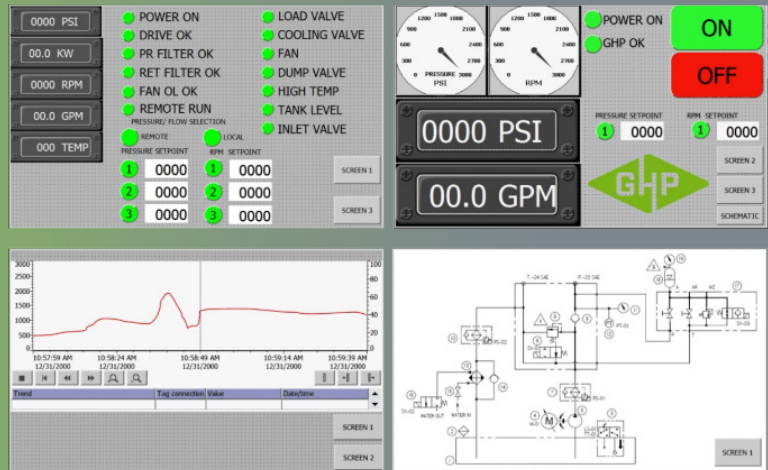
[www.greenhydraulicpower.com](http://www.greenhydraulicpower.com)

# Utilizing the latest technology in Variable Speed Drives

for industrial use, incorporating trusted component suppliers such as **ABB**, **Rockwell**, **Siemens**, and **Parker**.

Screens are able to display any value and all units are:

 **Industry 4.0 Ready**



ROI can be as quick as 12-18 months.



Stay connected with a computer, tablet or smartphone.



**GHP** reduces noise emission by up to 20 db(a), lowering safety liability while improving productivity.



With **GHP** technology, the system only provides hydraulic pressure and flow as needed, requiring very little or no cooling.

Utilizing the newest technology, **GHP** engineered turnkey systems are able to reduce energy consumption by up to 70%, when compared to conventional hydraulic systems.



We offer a leasing program on **GHP** units, reducing the financial burden to manageable monthly payments.



Our innovative and cost effective design allows us to offer **GHP** units for around the same price as conventional hydraulic systems.



Engineered turnkey systems utilize the latest available technology in variable frequency drives for industrial use.

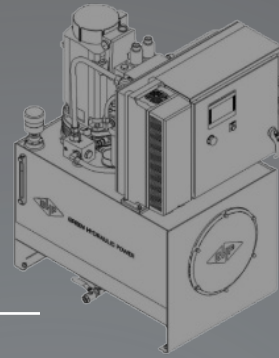


Choose from a long line of standard units covering most applications, custom build solutions are designed to meet individual requirements.



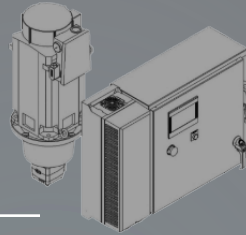


## GREEN HYDRAULIC POWER



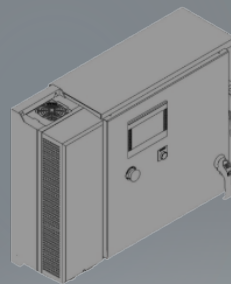
### Complete Turnkey System

- Standalone unit all integrated ready to connect.
- Little to no production downtime when switching with existing hydraulic power unit.
- Best energy savings and noise reduction.



### Motor/Drive Solution

- The High Efficiency Motor/Drive option is less costly with nearly the same energy savings compared to the Complete Turnkey System.
- Mount to an existing conventional Hydraulic Power Unit or process equipment to upgrade.



### Drive Only

- Less costly upgrade to apply VFD to HPUs while enjoying substantial energy savings.
- Add to an existing HPU with little impact to the configuration.

